



اتحاد جمعيات المزارعين الفلسطينيين
Palestinian Farmers Union (PFU)

ISRAELI SETTLER VIOLATIONS



March 2026 | West Bank, Palestine

KEY PATTERNS OF VIOLATIONS

March 2026 witnessed a sharp and organized escalation of Israeli settler violence across the West Bank, marked by over \$4.2 million in direct agricultural losses, the destruction of more than 8,000 olive trees, and the theft and killing of over 686 heads of livestock.

During this period, settlement expansion accelerated through the seizure of at least 3,441 dunums of land under direct military orders, alongside additional measures to uproot trees and clear agricultural areas.



Attacks systematically targeted the foundations of rural livelihoods, including the destruction of crops, agricultural infrastructure, and water systems. These violations were accompanied by intensified policies facilitating land control, contributing to **widespread displacement, economic loss, and the disruption of agricultural production systems.**

👉 The scale, coordination, and intensity of these attacks indicate a **deliberate strategy aimed at weakening Palestinian agriculture and consolidating control over land.**

He Was Teaching His Daughter Under a Tree... Then He Returned a Martyr

Case
study1

Double Killing Shakes Qaryut Village, South of Nablus | March 2, 2026

In the early hours of a seemingly ordinary morning in Qaryut village, farmer Mohammad Taha Muammar (52) was sitting under a tree in front of his home, teaching his daughter Lina. The calm moment was interrupted by the sound of a bulldozer uprooting olive trees on nearby land.

Mohammad told his daughter he would return shortly and went with his brother Fahim Muammar (47) to their land to confront what residents describe as an ongoing attempt to destroy and seize agricultural areas.

According to local accounts, the two unarmed brothers arrived at the site where more than twenty settlers had gathered. The situation quickly escalated as settlers, reportedly using a bulldozer, began leveling land and setting up tents in an attempt to impose a new reality. When residents gathered to stop the incursion, violence broke out, homes were damaged, and panic spread among families, including women and children who were attacked or terrified.

The confrontation escalated into live fire. Mohammad was struck by a bullet to the head and killed instantly. His brother Fahim was shot in the pelvis, later transported while bleeding, and died from his wounds. Both were unarmed and attempting to defend their land and homes.

Field activist Adham Al-Jawhari described the attack as organized, stating that settlers stormed the area with heavy machinery, began land leveling, and established tents. He said that when villagers confronted them, they were met with live ammunition. Several residents, including a child, were injured—some critically—while fear spread across the village.

Residents reported that Israeli forces arrived after the shooting had already begun. According to their accounts, forces did not stop the attack and instead provided protection for settlers during withdrawal. Tear gas was fired toward residential homes, causing suffocation among women, children, and the elderly. Due to delays in ambulance access, residents struggled to treat the wounded with limited resources.

Following the incident, forces also raided homes in the village, arrested several young men, and detained them inside the Muammar family home for interrogation.

The violence did not end there. Residents say attempts to establish new settlement outposts and resume bulldozing continued in the same area, with repeated return of machinery and tents, keeping the village under ongoing threat.

The killing of the two brothers has left Qaryut in grief and fear, as residents describe a continuing reality of land destruction, recurring attacks, and escalating pressure on farmers and their livelihoods.



AGRICULTURAL LOSSES

The agricultural sector suffered severe and targeted damage during March 2026, affecting both immediate production and long-term sustainability.

- More than 8,000 olive trees were uprooted or destroyed, including mature trees that require decades to replace
- At least 165 grapevines were damaged, alongside wheat and barley fields across hundreds of dunums
- 3 dunums of greenhouses were demolished, in addition to multiple agricultural structures and livestock facilities
- Irrigation systems, water tanks, and essential farming infrastructure were widely damaged



These attacks go beyond material destruction—they represent a systematic effort to undermine long-term agricultural resilience and food sovereignty.

LIVESTOCK LOSSES

Livestock, a critical source of income for rural households, was heavily targeted.

- Over **650 sheep** were stolen and 36 killed during the reporting period
- In some cases, attacks involved **large-scale thefts reaching up to 500 heads in a single incident**
- Poultry farms were also targeted, including the destruction of **4,500 chicks**

The loss of livestock has had immediate consequences, depriving families of both daily income and long-term economic security.



LAND SEIZURE AND EXPANSION POLICIES

Settlement expansion intensified through direct military and administrative measures aimed at consolidating control over agricultural land.

- **3,361 dunums were seized for military road construction in Jenin**
- **Additional confiscations included 59 dunums near Arraba military base and 21 dunums in strategic elevated areas**
- **Orders were issued to uproot trees and clear land for future expansion**



These measures are part of broader policies that include the expansion of “state land” designations, opening land registries for settlers, and increasing control in Areas A and B.

- **Collectively, these actions facilitate the systematic transfer of land from Palestinian farmers to settlement use.**

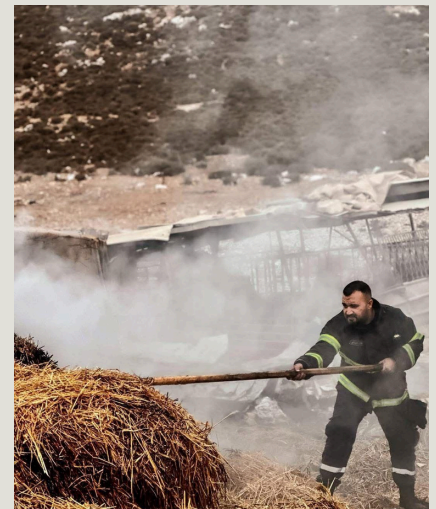
ECONOMIC IMPACT

The economic impact of settler violations in March 2026 was severe, with total losses exceeding \$4.2 million in a single month.

- Hebron accounted for approximately \$3.7 million in damages, reflecting extensive destruction of agricultural assets
- Jenin recorded losses exceeding \$1.5 million, largely linked to land seizure and infrastructure damage
- The destruction of olive trees and livestock represents a significant loss of long-term agricultural investment
- Damage to productive land and infrastructure has disrupted seasonal production and increased rehabilitation costs

Broader Economic Consequences

- Long-term decline in agricultural productivity
- High costs of replanting and recovery (olive trees require 5–10 years to become productive)
- Disruption of supply chains and market access
- Reduced capacity of farmers to reinvest in agriculture
- Increased reliance on external assistance



SOCIAL IMPACT

The consequences of these violations extend far beyond economic loss, directly affecting the stability and cohesion of rural communities.

- At least 57 Palestinian communities have been fully displaced, affecting more than 3,921 residents, with 17 additional communities partially displaced
- Displacement has intensified over recent years, with over 560 families forced to leave their communities
- Repeated attacks—totaling 25,875 incidents in 2025 alone—have created a persistent environment of fear and insecurity
- Loss of agricultural assets, including livestock and trees, has stripped families of their primary sources of livelihood



Social Consequences

- Rising poverty among farming households
- Increased risk of unemployment due to loss of income sources
- Psychological trauma and chronic stress, particularly among women and children
- Erosion of community cohesion as families are forced to relocate
- Weakening of traditional ties to land and agricultural life



MOST AFFECTED GOVERNORATES

- Hebron: largest share of losses, extensive destruction of trees and infrastructure
- Jenin: major land seizures and infrastructure targeting
- Tubas & Jordan Valley: livestock theft and displacement pressure
- Jerusalem & Bethlehem: land confiscation and agricultural damage
- Ramallah & Nablus: repeated attacks and targeting of livelihoods

Settler Attack in Khirbet Al-Rakeez Leaves Farmer Injured and Livestock Harmed

Case study 2

Masafer Yatta - Khirbet Al-Rakeez

Citizen Mohammad Yahya Abu Aram (35) suffered suffocation and fainting after settlers sprayed pepper spray directly in his face during an attack on shepherds and farmers in the western area of Khirbet Al-Rakeez in Masafer Yatta. He was transferred to Yatta Governmental Hospital for treatment.

During the same incident, settlers also released dogs onto a livestock herd, causing injuries to several sheep belonging to local shepherds.



A Settler Plan Surrounds Tarsala Mosque in a New Escalation Between Jenin and Nablus

Case study 3

Recent field documentation shows a serious escalation around the strategic Tarsala Mosque, located on the road connecting Jenin and Nablus, where Israeli occupation authorities have tightened their presence around the site.

According to reports, mobile settlement units (caravans) were placed around the mosque, and the occupation flag was raised above it, in what residents describe as part of a broader plan to impose control and re-settle the area through gradual on-the-ground changes.

The developments are seen locally as an attempt to alter the status of the site and its surrounding landscape, placing the mosque and its historical significance under increasing pressure.



COLLECTIVE IMPACT

The escalation observed in March 2026 reflects a clear shift toward organized and coordinated violence, combining field-level attacks with legal and administrative measures.

👉 These violations are accelerating:

- Forced displacement
- Collapse of rural livelihoods
- Food insecurity
- De facto annexation of agricultural land



Data from March 2026 confirms that settler violence is no longer incidental. It represents a systematic and coordinated campaign aimed at weakening the Palestinian agricultural sector, forcing farmers off their land, and consolidating settlement control over strategic areas.



Without urgent intervention, these patterns will continue to erode Palestinian food systems, rural communities, and long-term presence on the land.

WHAT CAN BE DONE?



PFU CALL FOR:

- Immediate protection for farmers and herders
- Deployment of international monitoring mechanisms
- Restoration and compensation programs
- Accountability for settler violence
- Protection of Palestinian agricultural lands



All statistics and documentation in this report were collected and verified by the Palestinian Farmers Union (PFU) through its network of field coordinators across the West Bank.

Palestinian Farmers Union

Ramallah - El Bireh - 12 Hollanda street
Near representative Office of Netherlands

Tel: +972 02 240 0792

Fax: +972 02 240 0746

Mail: info@pafu.ps

Website: www.pafu.ps